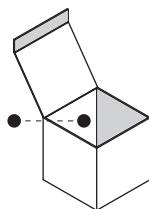
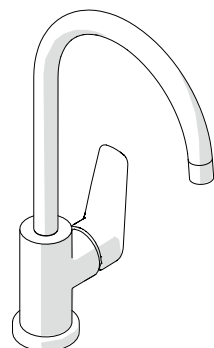


1



A

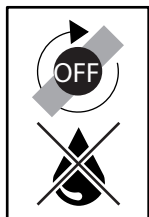
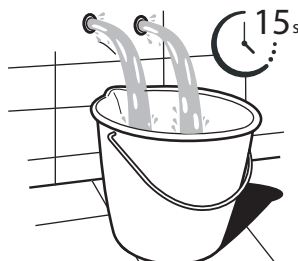
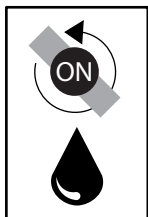
B

C1

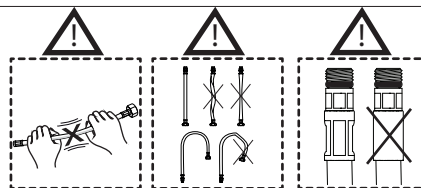
REINFORCEMENT
TRIANGLE D

D

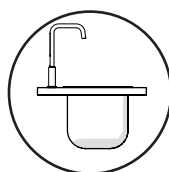
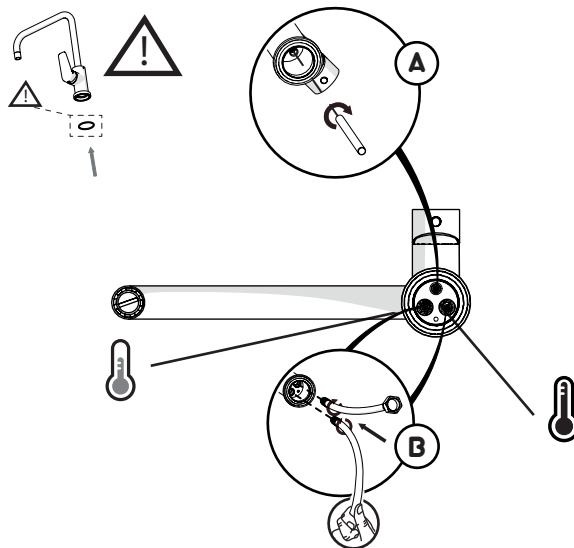
C



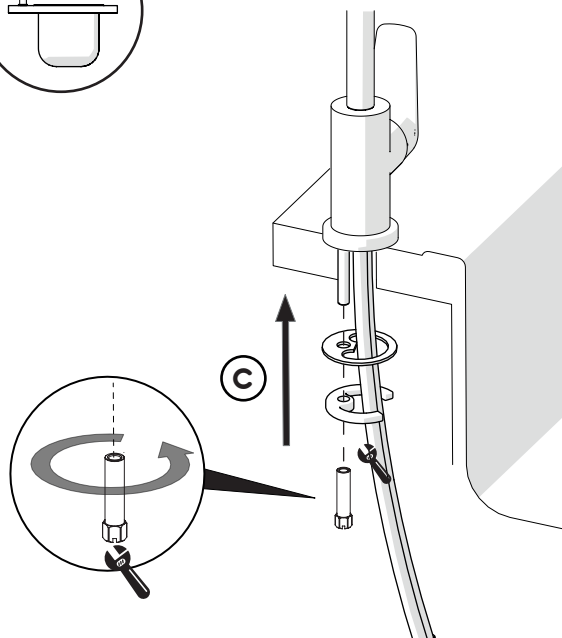
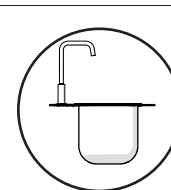
1



24



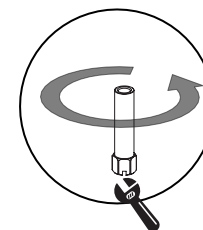
()

 \angle 


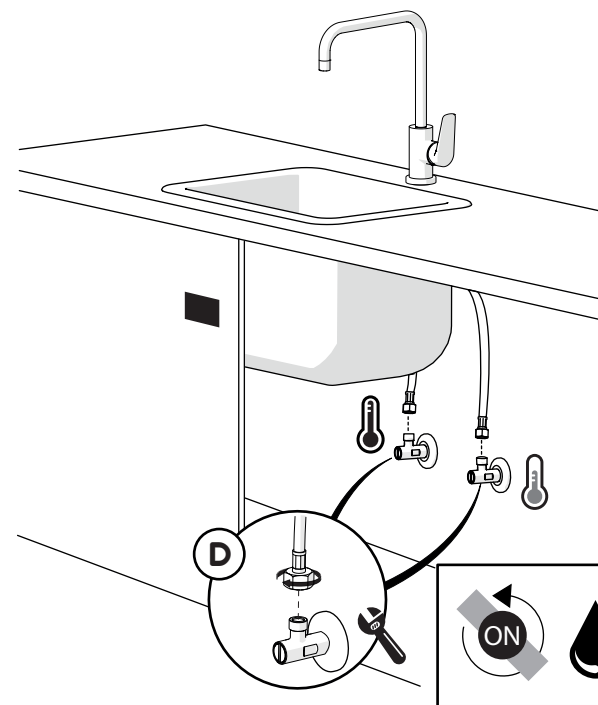
 ONLY : thin stainless steel shims (1 mm)

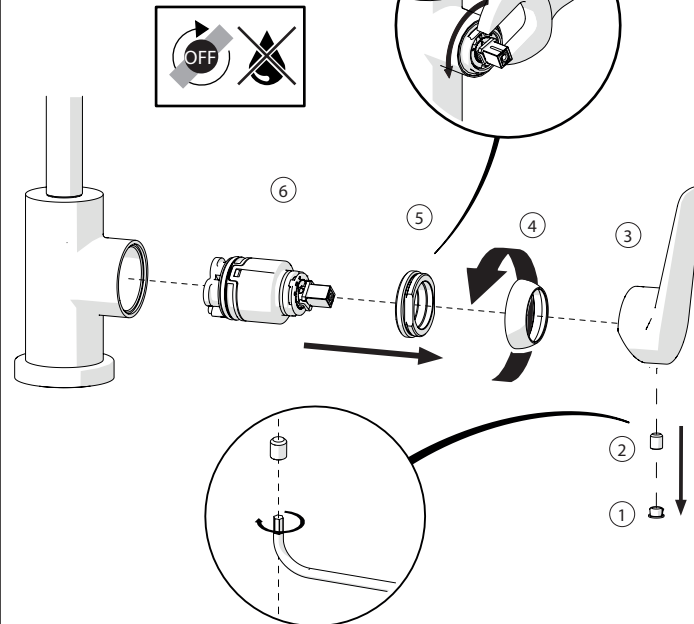
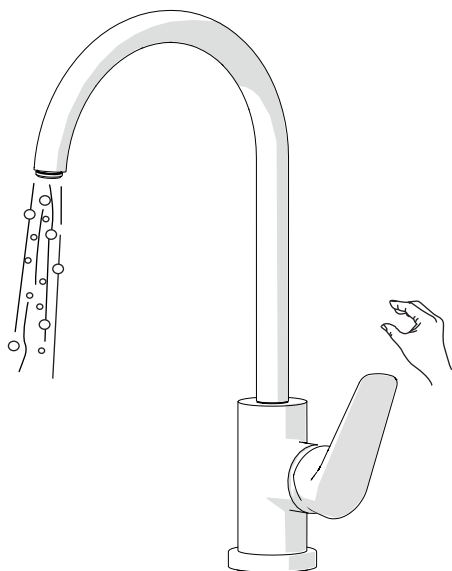
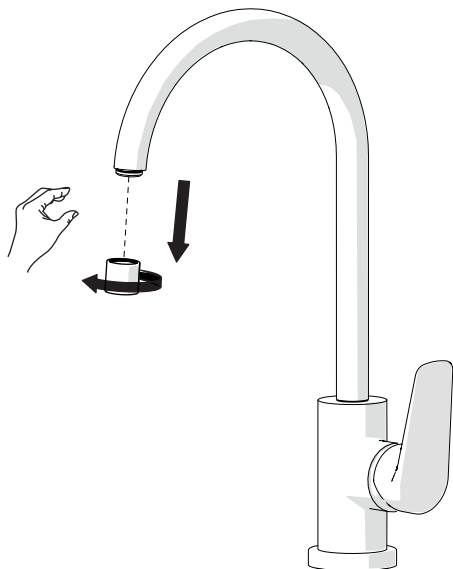


©

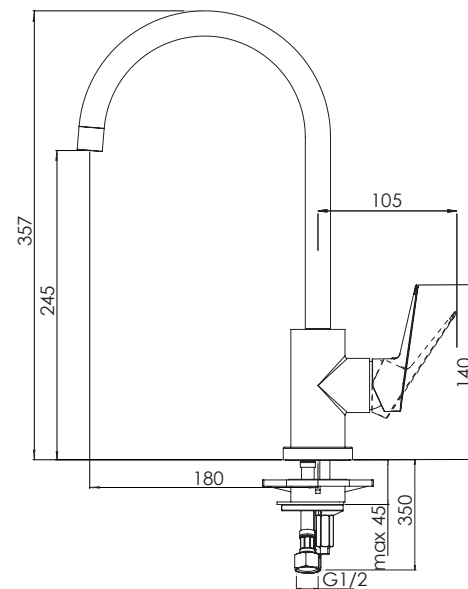


1

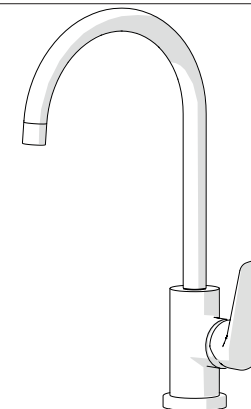




TECHNICAL DRAWING
TM-SNKGCP



galvinspecialised
commercial taps + fixtures



TM-SNKGCP

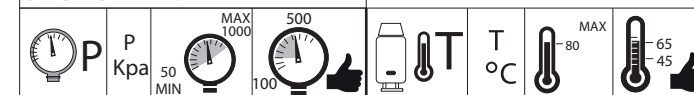
GalvinAssist™ Single Lever Gooseneck Sink Mixer

NOTE:

Galvin Specialised products must be installed in accordance with these installation instructions and in accordance with AS/NZS 3500



BEFORE STARTING



CLEANING

